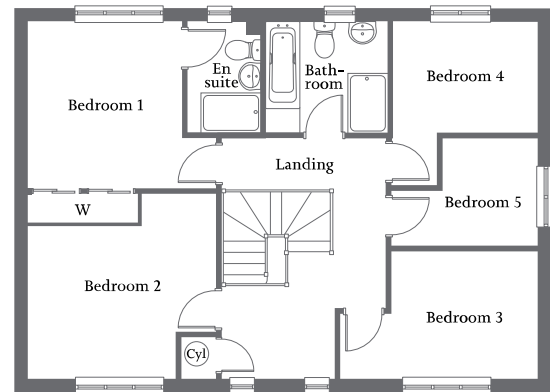
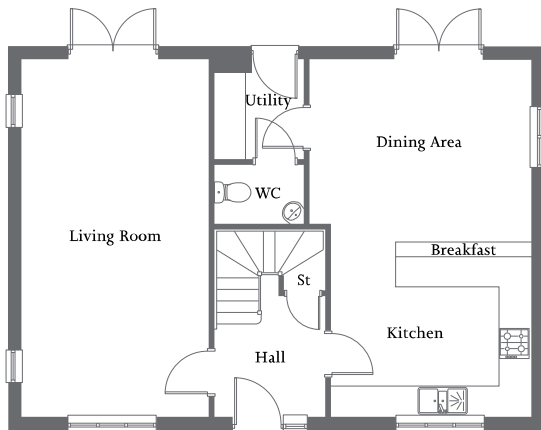




| Triple aspect living room with French Doors to rear garden | Kitchen/dining area with French Doors | Utility |
| Bedroom 1 with en suite and fitted wardrobe | Four further bedrooms and family bathroom | Single garage and parking spaces |



Ground Floor

Living Room	7.01m x 3.70m	23'0" x 12'2"
Kitchen/Dining Area	7.01m x 4.39m	23'0" x 14'5"
Utility	1.95m x 1.75m	6'5" x 5'9"

First Floor

Bedroom 1 (excl. wardrobe & door recess)	3.31m x 3.06m	10'10" x 10'0"
En suite	2.19m x 1.48m	7'2" x 4'9"
Bedroom 2	3.76m x 3.04m	12'3" x 9'11"
Bedroom 3	3.92m x 2.55m	12'10" x 8'4"
Bedroom 4	2.87m x 2.19m	9'5" x 7'2"
Bedroom 5	2.89m x 2.18m	9'6" x 7'1"
Bathroom	2.46m x 2.19m	8'0" x 7'2"