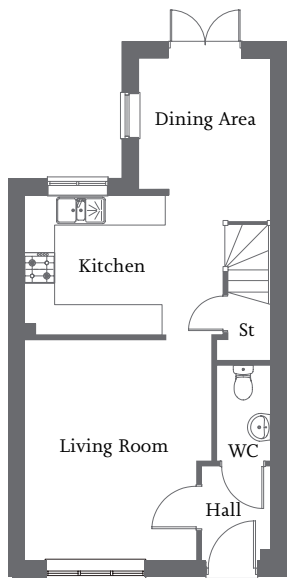


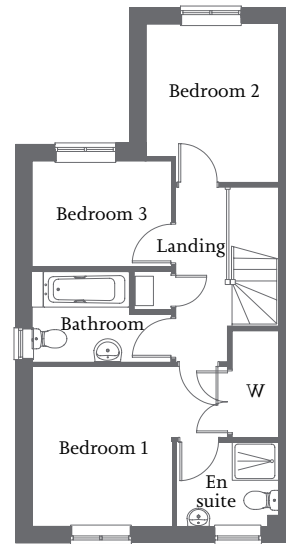


Front aspect living room | Kitchen/dining area with French Doors to rear |  
Bedroom 1 with en suite and fitted wardrobe | Two further bedrooms and family bathroom | Allocated parking spaces



**Ground Floor**

Living Room	4.33m x 3.70m	14'2" x 12'2"
Kitchen	2.85m x 2.78m	10'0" x 9'5"
Dining Area	2.62m x 2.61m	8'6" x 8'6"



**First Floor**

Bedroom 1 (excl. wardrobe)	3.85m x 3.15m	12'8" x 10'4"
En suite	2.00m x 1.67m	6'7" x 5'5"
Bedroom 2	2.62m x 2.61m	8'7" x 8'7"
Bedroom 3	2.73m x 2.10m	8'10" x 6'9"
Bathroom	2.76m x 1.78m	9'1" x 5'8"