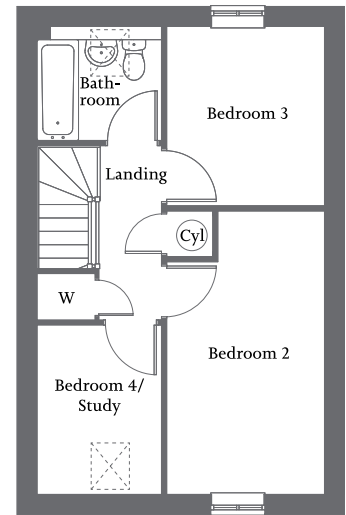
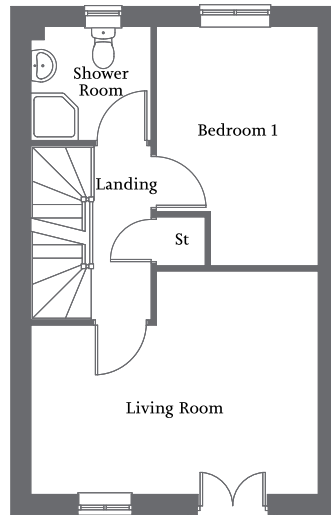
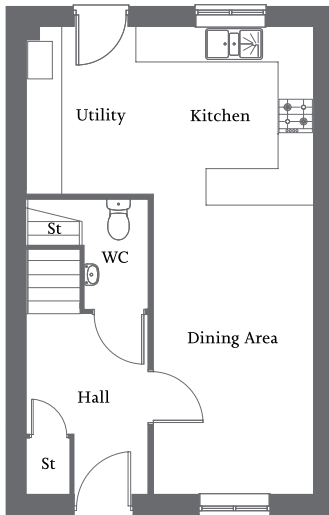




| Front aspect living room with Juliet balcony | Open-plan kitchen/dining/utility | Bedroom 1 and shower room to first floor |  
| Three further bedrooms and family bathroom to second floor | Single garage and allocated parking space |



**Ground Floor**

Kitchen/Utility	4.85m x 2.76m	15'11" x 9'0"
Dining Area	5.12m x 2.71m	16'10" x 6'9"

**First Floor**

Living Room	4.85m x 3.76m	15'11" x 12'3"
Bedroom 1	4.03m x 2.74m	13'3" x 9'0"
Shower Room	2.02m x 1.91m	6'7" x 6'3"

**Second Floor**

Bedroom 2	4.77m x 2.67m	15'7" x 8'8"
Bedroom 3	3.01m x 2.67m	9'10" x 8'8"
Bedroom 4/ Study	2.85m x 2.09m	9'3" x 6'9"
Bathroom	2.09m x 1.91m	6'9" x 6'3"