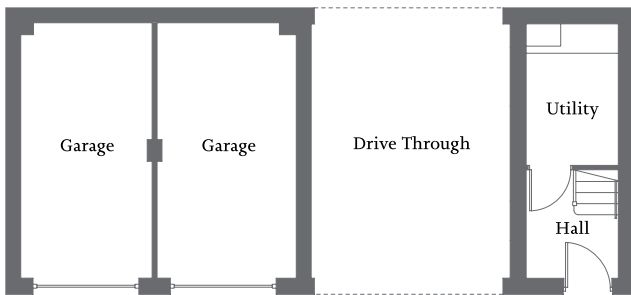


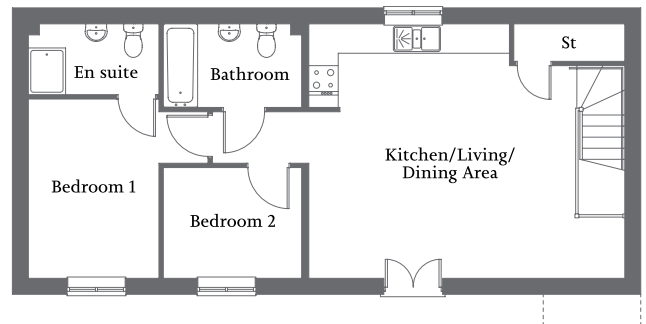


| Open-plan kitchen/living/dining area with Juliet balcony | Ground floor utility |
| En suite to bedroom 1 | One further bedroom and family bathroom | Garage and allocated parking |



Ground Floor

Utility	2.87m x 1.88m	9'5" x 6'2"
---------	---------------	-------------



First Floor

Kitchen/Living/Dining Area	6.23m x 5.18m	20'5" x 17'0"
Bedroom 1	3.65m x 2.66m	11'11" x 8'8"
En suite	2.66m x 1.44m	8'8" x 4'8"
Bedroom 2	3.02m x 2.25m	9'11" x 7'4"
Bathroom	2.82m x 1.70m	9'2" x 5'6"