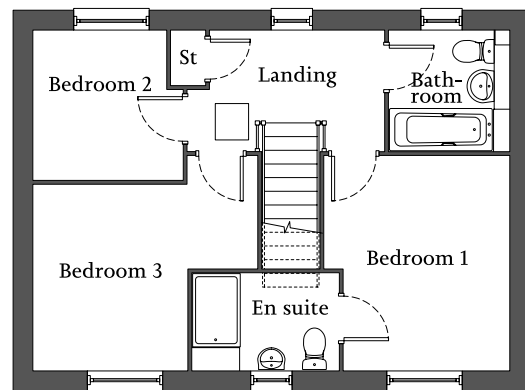
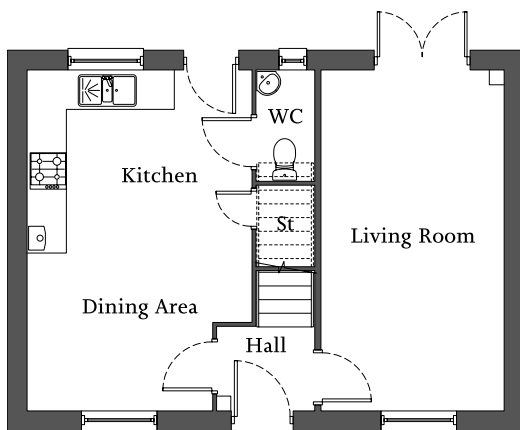




| Living room with French doors to rear | Open-plan kitchen/dining area |  
| En suite to bedroom 1 | Two further bedrooms and family bathroom | Single garage/allocated parking spaces |



**Ground Floor**

Living Room	5.96m x 3.02m	19'5" x 9'9"
Kitchen/ Dining Area	5.96m x 3.67m	19'5" x 12'0"

**First Floor**

Bedroom 1	3.56m x 3.07m	11'6" x 10'1"
En suite	2.41m x 1.58m	7'9" x 5'1"
Bedroom 2	2.48m x 2.21m	8'1" x 7'2"
Bedroom 3	3.71m x 3.08m	12'1" x 10'1"
Bathroom	1.97m x 1.71m	6'4" x 5'6"

Maximum dimensions are quoted in irregular shaped rooms.