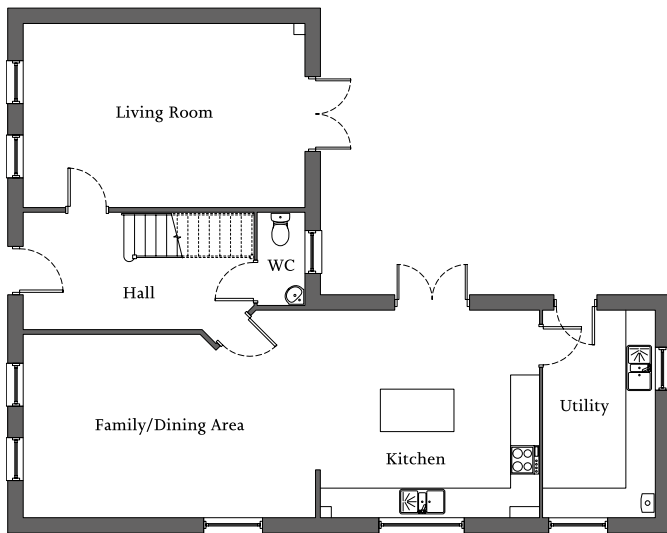


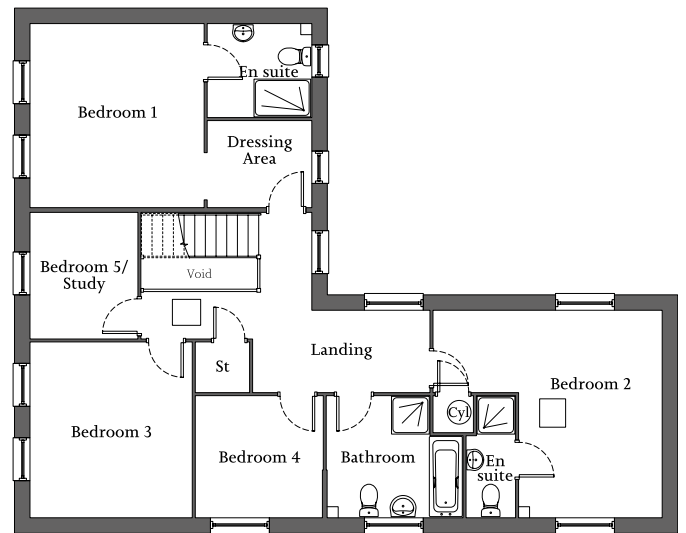


| Living room with French doors to rear | Open-plan kitchen/family/dining area | Separate utility |  
| En suite & dressing area to bedroom 1 | Four further bedrooms and family bathroom | Double garage |



**Ground Floor**

Living Room	5.97m x 3.57m	19'5" x 11'7"
Kitchen	4.50m x 4.34m	14'7" x 14'2"
Family/ Dining Area	5.95m x 4.34m	19'5" x 14'2"
Utility	4.34m x 2.39m	14'2" x 7'8"



**First Floor**

Bedroom 1	3.90m x 3.50m	12'7" x 11'4"
En suite	2.21m x 1.99m	7'2" x 6'5"
Dressing Area	2.21m x 1.84m	7'2" x 6'1"
Bedroom 2	4.65m x 4.39m	15'2" x 14'4"
En suite	1.70m x 1.02m	5'5" x 3'3"
Bedroom 3	3.72m x 3.44m	12'2" x 11'2"
Bedroom 4	2.84m x 2.69m	9'3" x 8'8"
Bedroom 5/Study	2.68m x 2.15m	8'7" x 7'1"
Bathroom	2.84m x 2.54m	9'3" x 8'3"

Maximum dimensions are quoted in irregular shaped rooms.