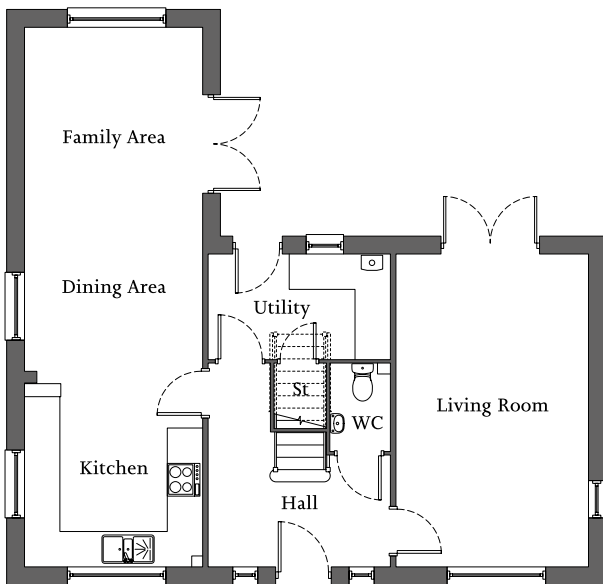


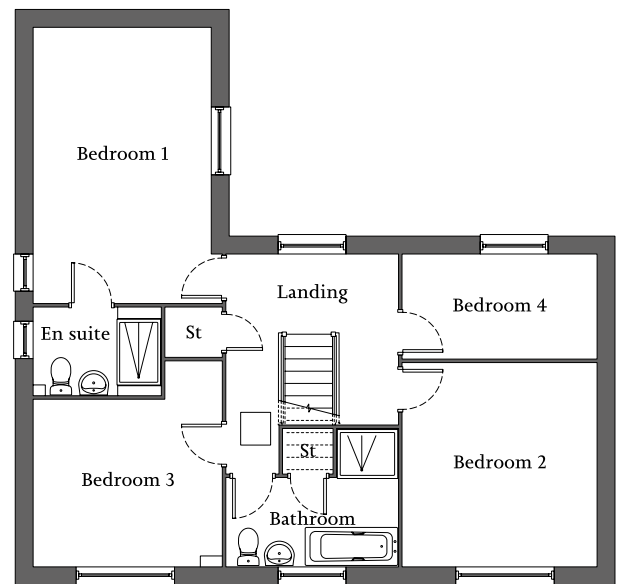


| Living room with French doors to rear | Open-plan kitchen/dining/family area with French doors | Utility |
| En suite to bedroom 1 | Three further bedrooms and family bathroom | Double garage |



Ground Floor

Living Room	5.69m x 3.53m	18'6" x 11'5"
Kitchen/Family/ Dining Area	9.86m x 3.22m	32'3" x 10'5"
Utility	3.30m x 1.94m	10'8" x 6'3"



First Floor

Bedroom 1	4.87m x 3.27m	15'9" x 10'7"
En suite	2.31m x 1.60m	7'5" x 5'2"
Bedroom 2	3.75m x 3.57m	12'3" x 11'7"
Bedroom 3	3.47m x 3.07m	11'3" x 10'1"
Bedroom 4	3.57m x 1.93m	11'7" x 6'3"
Bathroom	3.17m x 1.55m	10'4" x 5'1"

Maximum dimensions are quoted in irregular shaped rooms.