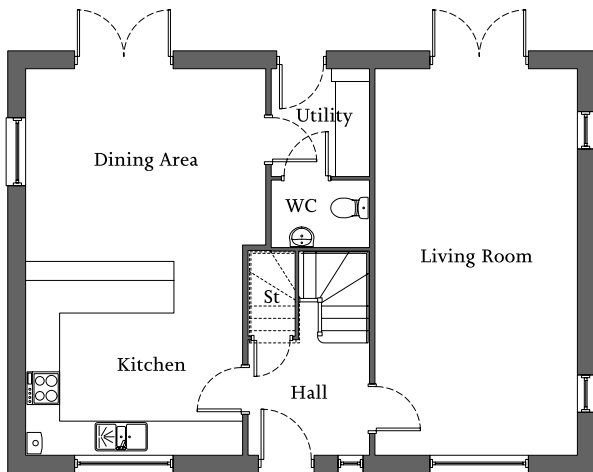


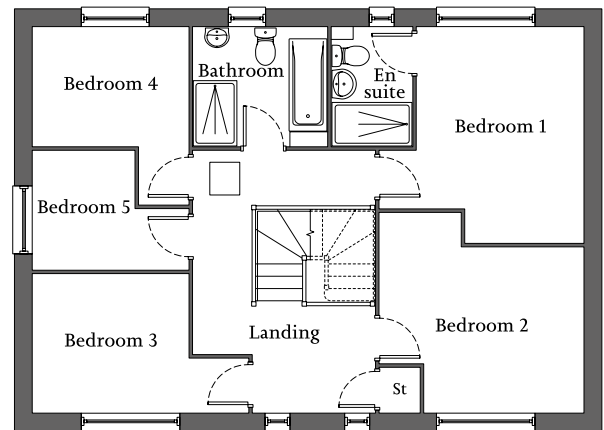


| Living room with French doors | Open-plan kitchen/dining area with French doors | Utility |
| En suite to bedroom 1 | Four further bedrooms and family bathroom | Double/single garage |



Ground Floor

Living Room	7.04m x 3.71m	23'1" x 12'1"
Kitchen/ Dining Area	7.04m x 3.93m	23'1" x 12'8"
Utility	1.75m x 1.71m	5'7" x 5'6"



First Floor

Bedroom 1	3.97m x 3.08m	13'0" x 10'1"
En suite	2.13m x 1.50m	6'9" x 4'9"
Bedroom 2	3.75m x 3.05m	12'3" x 10'0"
Bedroom 3	2.88m x 2.56m	9'4" x 8'3"
Bedroom 4	2.88m x 2.19m	9'4" x 7'1"
Bedroom 5	2.88m x 2.20m	9'4" x 7'2"
Bathroom	2.45m x 2.19m	8'0" x 7'1"

Maximum dimensions are quoted in irregular shaped rooms.