



ALLISON  
HOMES



Dual aspect living room with  
French Doors to rear

Kitchen/breakfast area with  
French Doors

Study

En suite and fitted wardrobe to  
bedroom 1 and bedroom 2

Two further bedrooms and  
family bathroom

Double garage and parking spaces

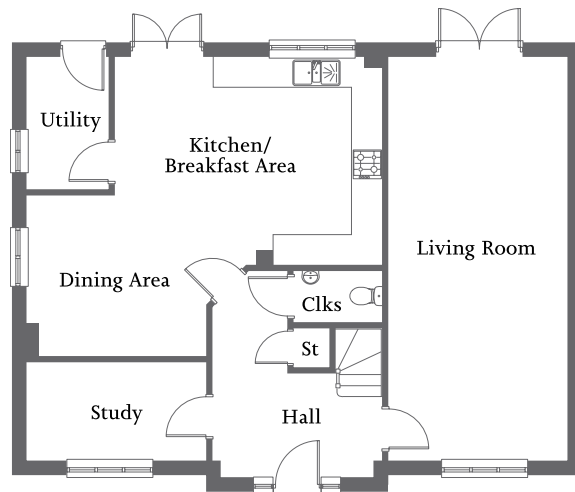
**THE BELTON**

Built with you in mind

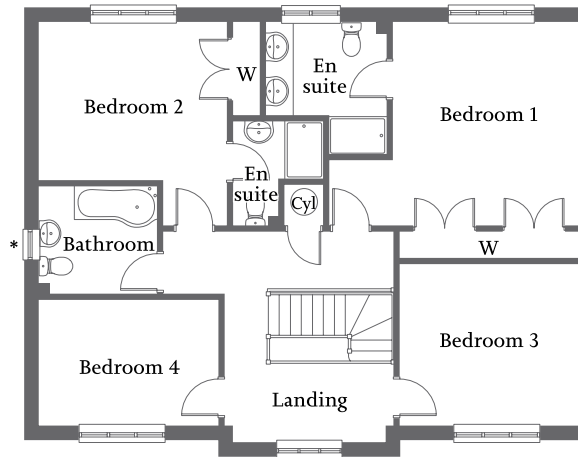
4 bedroom home



ALLISON  
HOMES



GROUND FLOOR



\* Window to specific plots only

FIRST FLOOR

### Ground Floor

Living Room	8.22m x 3.64m	27'0" x 11'11"
Dining Area	3.65m x 3.27m	12'0" x 10'9"
Kitchen/ Breakfast Area	5.46m x 4.23m	17'10" x 13'10"
Utility	2.68m x 1.67m	8'10" x 5'6"
Study	3.65m x 2.00m	12'0" x 6'7"

### First Floor

Bedroom 1	5.12m x 4.15m	16'10" x 13'7"
En suite	2.49m x 1.88m	8'2" x 6'2"
Bedroom 2	4.16m x 3.84m	13'8" x 12'7"
En suite	2.14m x 1.86m	7'0" x 6'1"
Bedroom 3	3.67m x 3.36m	12'0" x 11'0"
Bedroom 4	3.65m x 2.57m	12'0" x 8'5"
Bathroom	2.40m x 2.21m	7'10" x 7'3"

CONSUMER  
CODE FOR  
HOME BUILDERS

www.consumercode.co.uk



Please note: Computer generated images and floorplans show a typical house type. Details may vary from plot to plot. All measurements shown are approximate maximum room dimensions and are + or - 50mm. They are not intended to be used for carpet sizes, appliance sizes or items of furniture. Floorplans depict a typical layout of this type. Please refer to the development brochure for confirmation of the plot numbers for this particular house type. Depending on plot number, the floor plans for this house type may be opposite to those shown above. Windows and other elevational treatments are subject to change and may differ at each development, please confirm details with your Sales Executive. For further information on the specific materials for your chosen property, exact plot specification, details of external and internal finishes, dimensions, floorplans and full site-specific details, please speak with your Sales Executive. Landscaping shown is for illustration purposes only. Levels and building heights are subject to change. Every care has been taken to ensure the accuracy of these particulars, but the contents shall not form part of any contract and the vendors reserve the right to alter the specification and/or design without notice.

2430 (1984 sq ft)

Built with you in mind

THE BELTON

4 bedroom home