



## THE WINDSOR



3 bedrooms



2 bathrooms/  
en-suites



Parking spaces

Front aspect living room

Kitchen/dining area with French Doors to rear

Master bedroom with en-suite and fitted wardrobe

Two further bedrooms and family bathroom

Allocated parking spaces

Built with you in mind



ALLISON  
HOMES

# THE WINDSOR



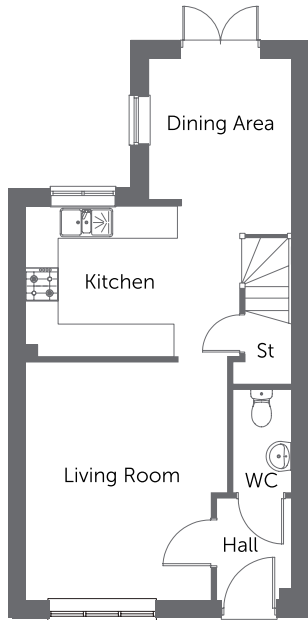
3 bedrooms



2 bathrooms/  
en-suites

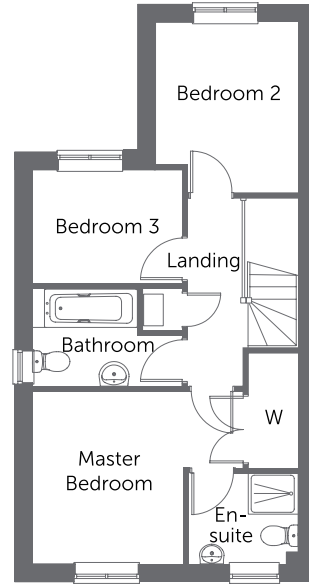


Parking spaces



## Ground Floor

Living Room	5.64m x 3.04m	18'6" x 10'0"
Kitchen	2.85m x 2.78m	10'0" x 9'5"
Dining Area	2.85m x 2.78m	10'0" x 9'5"



## First Floor

Master Bedroom (excl. wardrobe)	3.85m x 3.15m	12'8" x 10'4"
En-suite	2.00m x 1.67m	6'7" x 5'5"
Bedroom 2	2.62m x 2.61m	8'7" x 8'7"
Bedroom 3	2.50m x 2.43m	8'2" x 8'0"
Bathroom	2.76m x 1.78m	9'1" x 5'8"

CONSUMER  
CODE FOR  
HOME BUILDERS

[www.consumercode.co.uk](http://www.consumercode.co.uk)



Please note: All measurements shown are approximate maximum room dimensions and are + or - 50mm. They are not intended to be used for carpet sizes, appliance sizes or items of furniture. Floorplans depict a typical layout of this type. Please refer to the development brochure for confirmation of the plot numbers for this particular house type. Depending on plot number, the floor plans for this house type may be opposite to those shown above. Windows and other elevational treatments are subject to change and may differ at each development, please confirm details with your Sales Executive. For further information on the specific materials for your chosen property, exact plot specification, details of external and internal finishes, dimensions, floorplans and full site-specific details, please speak with your Sales Executive. Landscaping shown is for illustration purposes only. Levels and building heights are subject to change. Every care has been taken to ensure the accuracy of these particulars, but the contents shall not form part of any contract and the vendors reserve the right to alter the specification and/or design without notice.  
2308 (918 sq ft) CF0921

Built with you in mind



ALLISON  
HOMES