



ALLISON
HOMES



Triple aspect living room with
French Doors to rear garden

Kitchen/dining area with
French Doors

Utility

Bedroom 1 with en-suite
and fitted wardrobe

Four further bedrooms and
family bathroom

Single garage and allocated
parking spaces

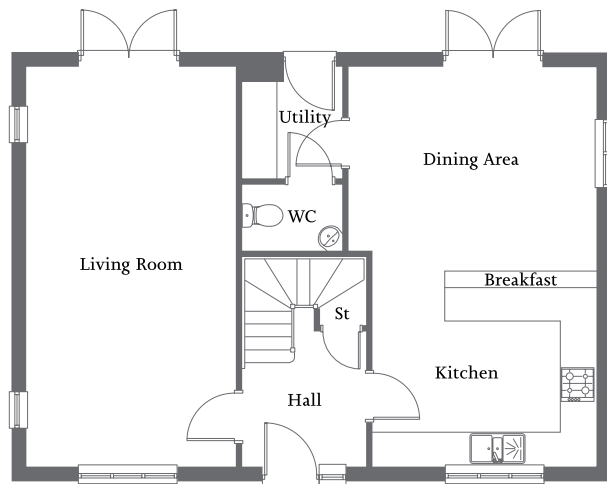
THE MIDDLETHORPE

Built with you in mind

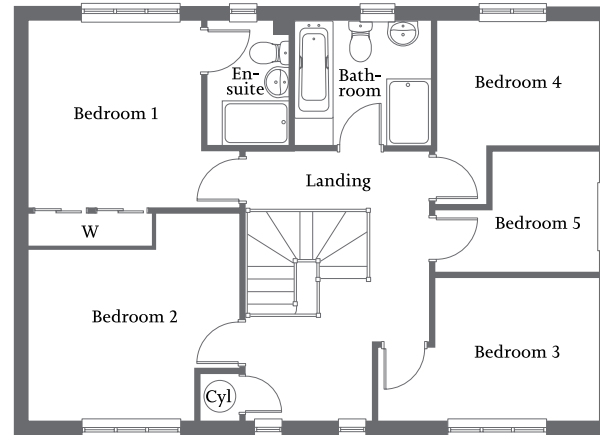
5 bedroom home



ALLISON
HOMES



GROUND FLOOR



FIRST FLOOR

Ground Floor

Living Room	7.00m x 3.70m	23'0" x 12'2"
Kitchen/ Dining Area	7.00m x 4.39m	23'0" x 14'5"
Utility	1.95m x 1.75m	6'5" x 5'9"

First Floor

Bedroom 1 (excl. wardrobe & recess)	3.30m x 3.05m	10'10" x 10'0"
En-suite	2.18m x 1.46m	7'2" x 4'9"
Bedroom 2	3.74m x 3.02m	12'3" x 9'11"
Bedroom 3	3.92m x 2.54m	12'10" x 8'4"
Bedroom 4	2.86m x 2.18m	9'5" x 7'2"
Bedroom 5	2.89m x 2.15m	9'6" x 7'1"
Bathroom	2.43m x 2.18m	8'0" x 7'2"

CONSUMER
CODE FOR
HOME BUILDERS

www.consumercode.co.uk



Please note: All measurements shown are approximate maximum room dimensions and are + or - 50mm. They are not intended to be used for carpet sizes, appliance sizes or items of furniture. Floorplans depict a typical layout of this type. Please refer to the development brochure for confirmation of the plot numbers for this particular house type. Depending on plot number, the floor plans for this house type may be opposite to those shown above. Windows and other elevational treatments are subject to change and may differ at each development, please confirm details with your Sales Executive. For further information on the specific materials for your chosen property, exact plot specification, details of external and internal finishes, dimensions, floorplans and full site-specific details, please speak with your Sales Executive. Landscaping shown is for illustration purposes only. Levels and building heights are subject to change. Every care has been taken to ensure the accuracy of these particulars, but the contents shall not form part of any contract and the vendors reserve the right to alter the specification and/or design without notice.

2513 (1556 sq ft)

THE MIDDLETORPE

Built with you in mind

5 bedroom home