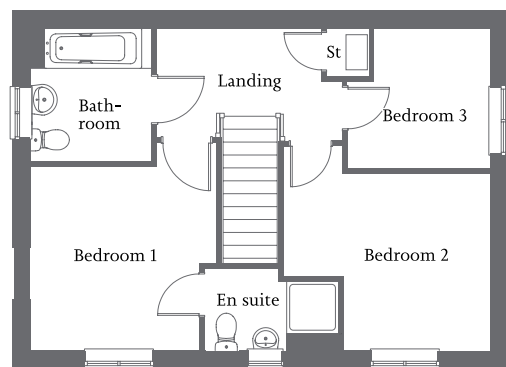
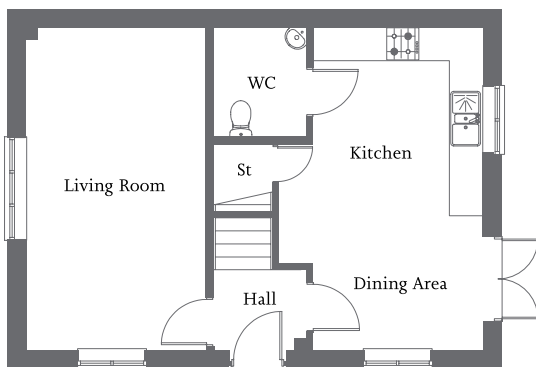




| Dual aspect living room | Kitchen/dining area with French Doors |
| Bedroom 1 with en suite | Two further bedrooms and family bathroom | Allocated parking spaces |



Ground Floor

Living Room	5.64m x 3.15m	18'6" x 10'4"
Kitchen/Dining Area	5.64m x 3.58m	18'6" x 11'9"

* This home can be adapted as a Lifetime Home. They are ordinary homes designed to incorporate 16 Design Criteria that can be universally applied to new homes at minimal cost. Each design feature adds to the comfort and convenience of the home and supports the changing needs of individuals and families at different stages of life.

First Floor

Bedroom 1	3.22m x 3.20m	10'6" x 10'6"
En suite	2.33m x 1.43m	7'8" x 4'8"
Bedroom 2	3.59m x 3.09m	11'9" x 10'2"
Bedroom 3	2.49m x 2.43m	8'2" x 8'0"
Bathroom	2.34m x 2.09m	7'7" x 6'9"