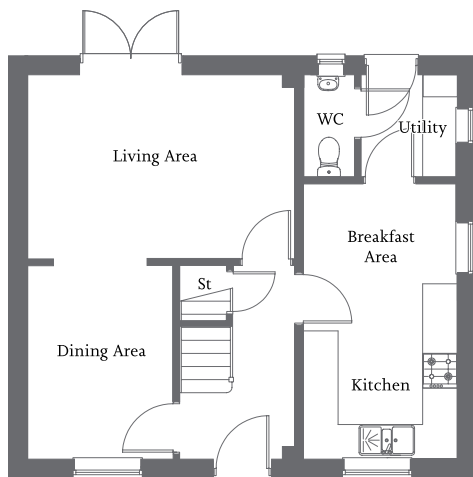


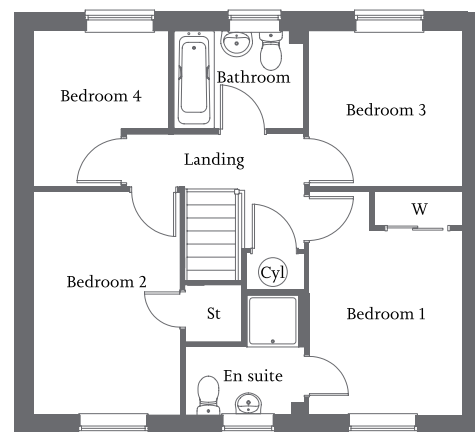


| Living area with French Doors to rear | Kitchen with breakfast area and utility |  
| En suite and fitted wardrobe to bedroom 1 | Three further bedrooms and family bathroom | Single garage and parking spaces |



### Ground Floor

Living Area	4.66m x 3.18m	15'3" x 10'5"
Dining Area	3.35m x 2.52m	11'0" x 8'3"
Kitchen/ Breakfast Area	4.77m x 2.66m	15'8" x 8'9"



### First Floor

Bedroom 1 (incl. wardrobe)	3.85m x 2.65m	12'8" x 8'8"
En suite	2.33m x 1.43m	7'8" x 4'8"
Bedroom 2	3.85m x 2.53m	12'8" x 8'4"
Bedroom 3	2.69m x 2.65m	8'10" x 8'8"
Bedroom 4	2.69m x 2.33m	8'10" x 7'8"
Bathroom	2.23m x 1.69m	7'4" x 5'7"