



ALLISON
HOMES



Living area with French Doors

Kitchen with breakfast area

Separate utility

Master bedroom with en-suite
and fitted wardrobe

Single garage and allocated
parking spaces

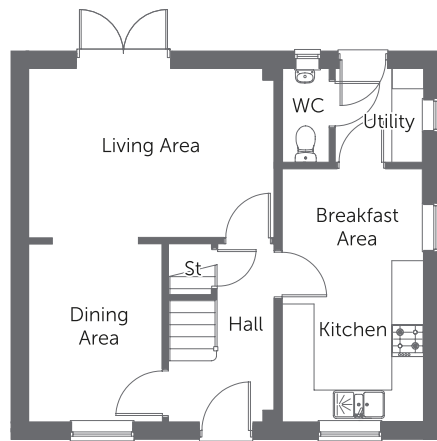
Built with you in mind

THE KEDDINGTON

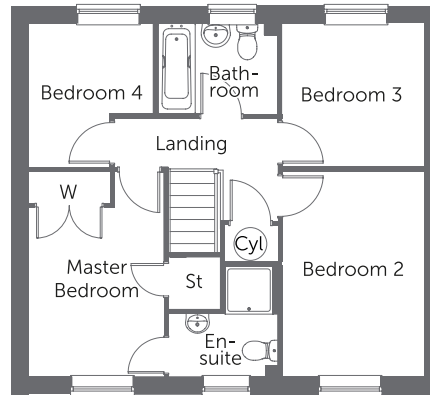
4 bedroom home with garage



ALLISON
HOMES



GROUND FLOOR



FIRST FLOOR

Ground Floor

Living Area	4.62m x 3.18m	15'2" x 10'5"
Dining Area	3.35m x 2.52m	11'0" x 8'3"
Kitchen/ Breakfast Area	4.77m x 2.66m	15'8" x 8'9"
Utility	1.76m x 1.66m	5'9" x 5'6"

First Floor

Master Bedroom	3.87m x 2.66m	12'8" x 8'4"
En-suite	2.07m x 2.05m	6'9" x 6'8"
Bedroom 2	3.85m x 2.54m	12'8" x 8'8"
Bedroom 3	2.70m x 2.66m	8'10" x 8'8"
Bedroom 4	2.70m x 2.34m	8'10" x 7'8"
Bathroom	2.25m x 1.70m	8'4" x 5'7"

CONSUMER
CODE FOR
HOME BUILDERS

www.consumercode.co.uk



Please note: All measurements shown are approximate maximum room dimensions and are + or - 50mm. They are not intended to be used for carpet sizes, appliance sizes or items of furniture. Floorplans depict a typical layout of this type. Please refer to the development brochure for confirmation of the plot numbers for this particular house type. Depending on plot number, the floor plans for this house type may be opposite to those shown above. Windows and other elevational treatments are subject to change and may differ at each development, please confirm details with your Sales Advisor. For further information on the specific materials for your chosen property, exact plot specification, details of external and internal finishes, dimensions, floorplans and full site-specific details, please speak with your Sales Advisor. Landscaping shown is for illustration purposes only. Every care has been taken to ensure the accuracy of these particulars, but the contents shall not form part of any contract and the vendors reserve the right to alter the specification and/or design without notice.

2401 (1079 sq ft)

THE KEDDINGTON

4 bedroom home with garage

Built with you in mind