



ALLISON
HOMES



Open plan kitchen/dining/
family area with French Doors

Separate utility

Study area

Master bedroom with en-suite
and fitted wardrobe

Single garage and allocated
parking spaces

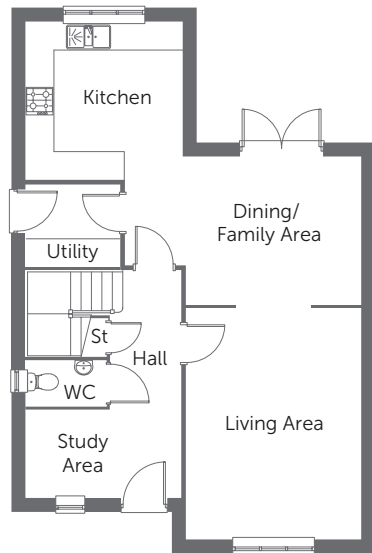
THE DEMBLEBY

4 bedroom home with garage

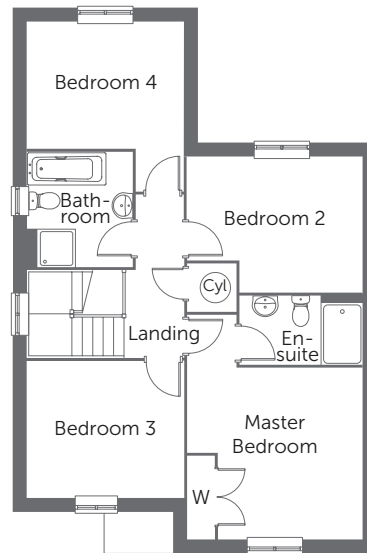
Built with you in mind



ALLISON
HOMES



GROUND FLOOR



FIRST FLOOR

Ground Floor

Living Area	4.98m x 3.76m	16'4" x 12'4"
Kitchen	3.40m x 3.37m	11'1" x 11'0"
Dining/ Family Area	3.76m x 3.20m	12'4" x 10'5"
Utility	2.02m x 1.76m	6'7" x 5'9"
Study Area	1.88m x 1.82m	6'2" x 5'11"

First Floor

Master Bedroom	3.77m x 3.69m	12'4" x 12'1"
En-suite	2.64m x 1.47m	8'8" x 5'0"
Bedroom 2	3.77m x 2.94m	12'4" x 9'6"
Bedroom 3	3.38m x 2.93m	11'1" x 9'7"
Bedroom 4	3.38m x 2.72m	11'0" x 8'11"
Bathroom	2.46m x 2.27m	8'0" x 7'5"

CONSUMER
CODE FOR
HOME BUILDERS

www.consumercode.co.uk



Please note: All measurements shown are approximate maximum room dimensions and are + or - 50mm. They are not intended to be used for carpet sizes, appliance sizes or items of furniture. Floorplans depict a typical layout of this type. Please refer to the development brochure for confirmation of the plot numbers for this particular house type. Depending on plot number, the floor plans for this house type may be opposite to those shown above. Windows and other elevational treatments are subject to change and may differ at each development, please confirm details with your Sales Advisor. For further information on the specific materials for your chosen property, exact plot specification, details of external and internal finishes, dimensions, floorplans and full site-specific details, please speak with your Sales Advisor. Landscaping shown is for illustration purposes only. Every care has been taken to ensure the accuracy of these particulars, but the contents shall not form part of any contract and the vendors reserve the right to alter the specification and/or design without notice.

2409 (1436 sq ft)

THE DEMBLEBY

4 bedroom home with garage

Built with you in mind