



ALLISON
HOMES



Front aspect living area

Kitchen/dining area with
French Doors

Study

Master bedroom with en-suite
and fitted wardrobe

Four further bedrooms and
family bathroom

Single garage and allocated
parking space(s)

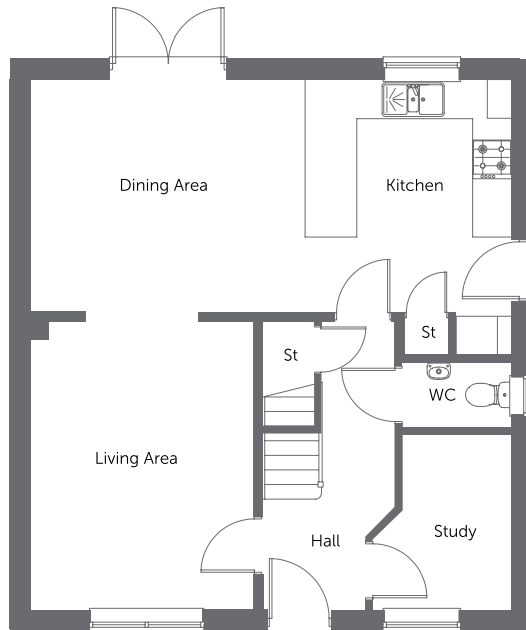
Built with you in mind

THE RIPPINGALE

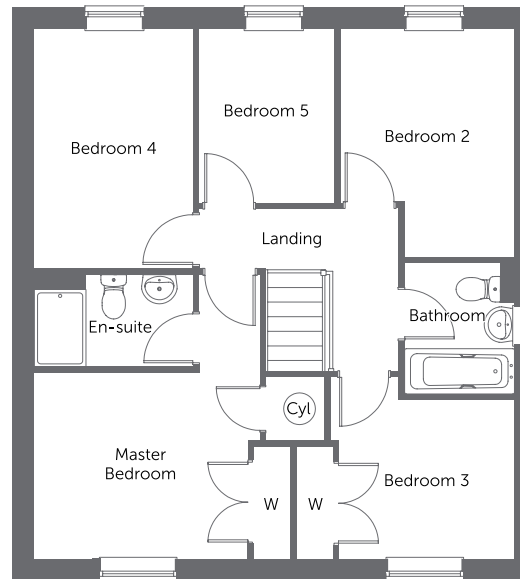
5 bedroom home



ALLISON
HOMES



GROUND FLOOR



FIRST FLOOR

Ground Floor

Living Area	4.46m x 3.44m	14'8" x 11'3"
Kitchen/ Dining Area	7.44m x 3.59m	24'5" x 11'9"
Study	2.72m x 2.15m	8'11" x 7'1"

First Floor

Master Bedroom (excl. wardrobe)	3.29m x 2.86m	10'10" x 9'5"
En-suite	2.33m x 1.43m	7'8" x 4'8"
Bedroom 2	3.52m x 2.69m	11'7" x 8'10"
Bedroom 3 (excl. wardrobe)	2.70m x 2.45m	8'10" x 8'0"
Bedroom 4	3.70m x 2.45m	12'2" x 8'0"
Bedroom 5	2.68m x 2.07m	8'10" x 6'9"
Bathroom	2.00m x 1.70m	6'7" x 5'7"

CONSUMER
CODE FOR
HOME BUILDERS

www.consumercode.co.uk



Please note: All measurements shown are approximate maximum room dimensions and are + or - 50mm. They are not intended to be used for carpet sizes, appliance sizes or items of furniture. Floorplans depict a typical layout of this type. Please refer to the development brochure for confirmation of the plot numbers for this particular house type. Depending on plot number, the floor plans for this house type may be opposite to those shown above. Windows and other elevational treatments are subject to change and may differ at each development, please confirm details with your Sales Advisor. For further information on the specific materials for your chosen property, exact plot specification, details of external and internal finishes, dimensions, floorplans and full site-specific details, please speak with your Sales Advisor. Landscaping shown is for illustration purposes only. Every care has been taken to ensure the accuracy of these particulars, but the contents shall not form part of any contract and the vendors reserve the right to alter the specification and/or design without notice.

2512 (1329 sq ft) BG0421

THE RIPPINGALE

Built with you in mind

5 bedroom home