



ALLISON
HOMES



Open-plan kitchen/living/
dining area with French Doors

Separate utility

Master bedroom with en-suite

Two further bedrooms
and family bathroom

Raised decking area with
glass balustrade

Parking space



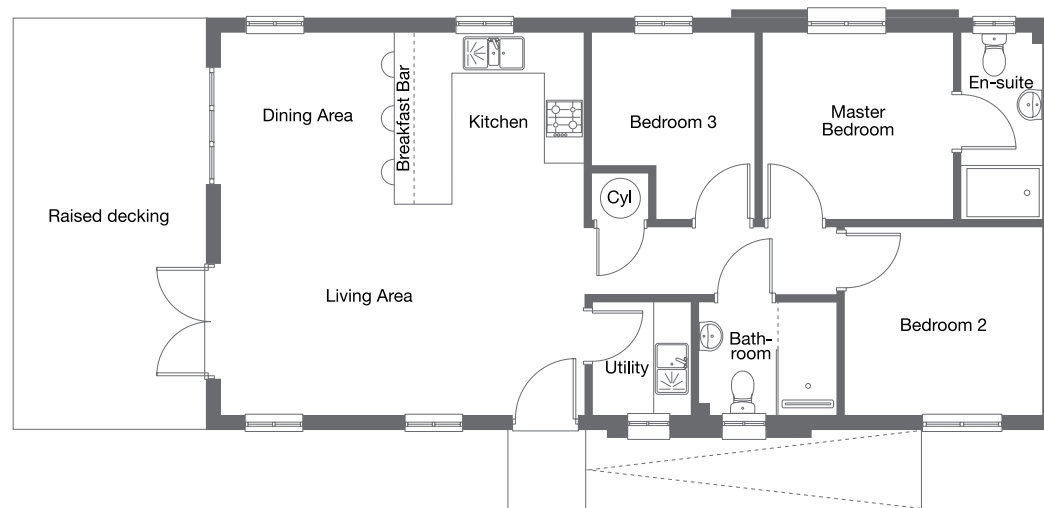
Built with you in mind

THE AMBER

3 bedroom home with parking



ALLISON
HOMES



GROUND FLOOR

Ground Floor

Living/Dining Area	5.95m x 5.70m	19'6" x 18'8"
Kitchen	2.96m x 2.67m	9'9" x 8'9"
Utility	1.76m x 1.56m	5'9" x 5'1"
Master Bedroom	3.00m x 2.92m	9'10" x 9'7"
En-suite	2.92m x 1.24m	9'7" x 4'1"
Bedroom 2	3.06m x 2.91m	10'0" x 9'7"
Bedroom 3 (incl. cylinder cupboard)	2.92m x 2.56m	9'7" x 8'5"
Bathroom	2.18m x 1.76m	7'2" x 5'9"
Raised decking	6.45m x 3.00m	21'2" x 9'10"

CONSUMER
CODE FOR
HOME BUILDERS

www.consumercode.co.uk



Please note that these properties are holiday homes and may only be occupied for 11 months of the year.

All measurements shown are approximate maximum room dimensions and are + or - 50mm. They are not intended to be used for carpet sizes, appliance sizes or items of furniture. Floorplans depict a typical layout of this type. Please refer to the development brochure for confirmation of the plot numbers for this particular house type. Depending on plot number, the floor plans for this house type may be opposite to those shown above. Windows and other elevational treatments are subject to change and may differ at each development, please confirm details with your Sales Advisor. For further information on the specific materials for your chosen property, exact plot specification, details of external and internal finishes, dimensions, floorplans and full site-specific details, please speak with your Sales Advisor. Landscaping shown is for illustration purposes only. Every care has been taken to ensure the accuracy of these particulars, but the contents shall not form part of any contract and the vendors reserve the right to alter the specification and/or design without notice.

(823 sq ft)

Built with you in mind

THE AMBER

3 bedroom home with parking