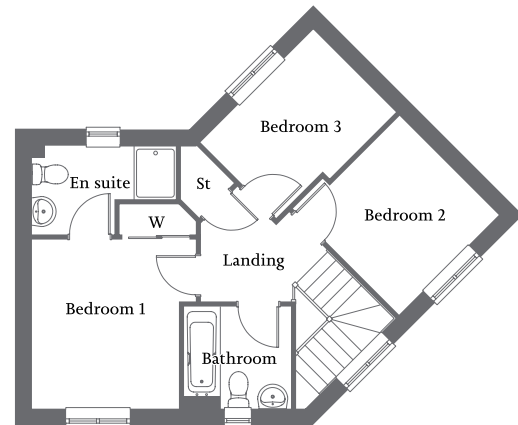
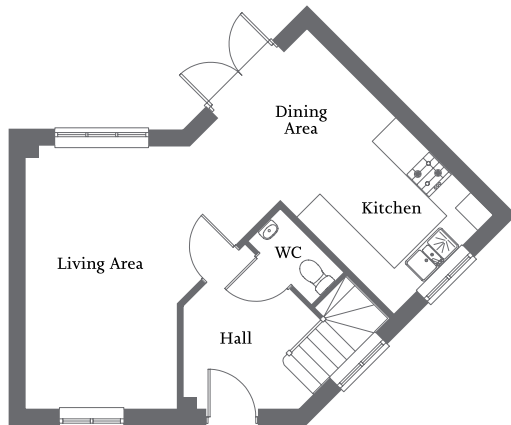




| Front aspect living area | Open-plan kitchen/dining area with French Doors |  
| En suite and fitted wardrobe to bedroom 1 | Two further bedrooms and family bathroom | Allocated parking spaces |



**Ground Floor**

Living Area	4.96m x 2.84m	16'3" x 9'4"
Kitchen/Dining Area	4.96m x 2.60m	16'3" x 8'6"

**First Floor**

Bedroom 1	3.19m x 3.06m	10'5" x 10'0"
En suite	2.69m x 1.67m	8'10" x 5'6"
Bedroom 2	2.67m x 2.66m	8'9" x 8'8"
Bedroom 3	3.01m x 2.20m	9'10" x 7'2"
Bathroom	2.03m x 1.92m	6'8" x 6'4"