

THE KIRTON

Two bedroom bungalow

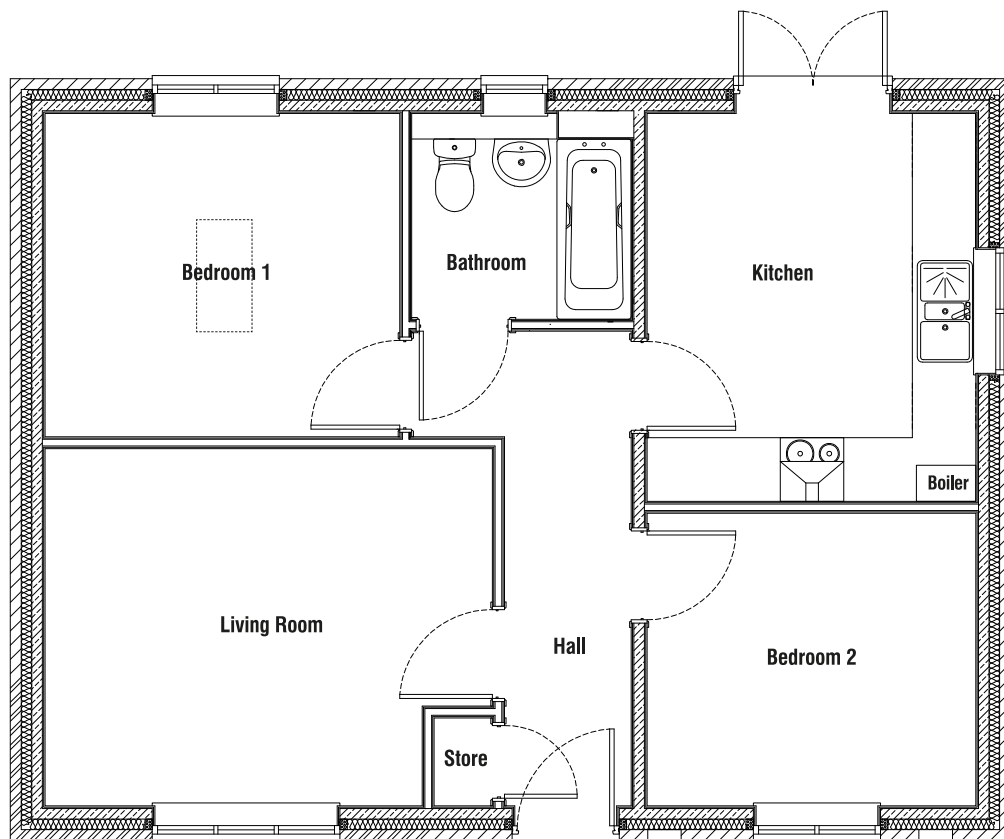


THE KIRTON

Two bedroom bungalow

CONSUMER
CODE FOR
HOME BUILDERS

www.consumercode.co.uk



Living Room	4.22m x 3.37m 13'10" x 11'1"
Kitchen	3.10m x 3.66m 10'2" x 12'0"
Bedroom 1	3.35m x 3.05m 11'0" x 10'0"
Bedroom 2	3.10m x 2.76m 10'2" x 9'1"
Bathroom	2.07m x 1.94m 6'9" x 6'4"

External wall finishes

External wall finishes may vary from plot to plot or development to development. Please ask your sales advisor to confirm if the property you are interested in has a brick, stone or rendered external wall finish.

Solar panels

Solar photovoltaic (PV) panels are fitted as standard on selected properties. Please ask your sales advisor to confirm if solar panels are fitted to the property on the plot number you are interested in.

Plot numbers

Please refer to the development brochure for confirmation of the plot numbers for this particular house type.

All house type images are for illustrative purposes only and the final building detailing and finishes may vary from what is shown.

Please see our sales advisors for full site specific details.



ALLISON
HOMES

All measurements shown are approximate maximum room dimensions.

Depending on plot number, the floor plans for this house type may be opposite to those shown above.

1206 (626) 0817

Every care has been taken to ensure the accuracy of these particulars but the contents shall not form part of any contract and the vendors reserve the right to alter specification and/or design without notice. Landscaping shown is for illustration purposes only.

www.allison-homes.co.uk